



Schoneveld  
breeding



# Variety Guide

2020 / 2021

ASIA & MIDDLE EAST 

# PLANT MORE VALUE

Schoneveld Breeding stands for innovative breeding and flower seed production of genetically strong flowering pot plants that provides living pleasure to every generation. We offer more than just a quality seed. Growers worldwide can come to us for growing advice and sales support as well as sustainable product-market combinations. At Schoneveld Breeding you will find a sustainable, high-quality product for every generation. We create more value for all chain partners through smart partnerships and professional support in cultivation and the marketing of products.

## STRONG GENETICS

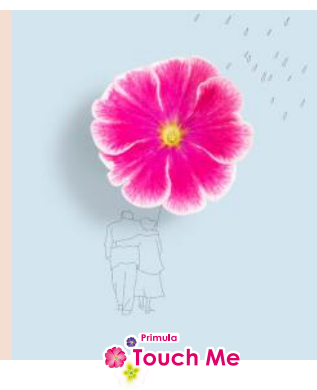
We breed for sustainable flowering pot plants. Our products are floriferous, have a long shelf life and a round compact plant structure. For growers, our products can be grown more efficiently as they often require less growth regulators and lower fertilization rates.

## ADDED VALUE FOR ALL PARTNERS

It does not stop with the sales of seeds. To ensure the best products for consumers and a better return for the grower, we offer growing advice and sales support to all chain partners. We offer various selections within our product groups, unique product-market combinations and are affiliated with leading producer organizations.

## NEXT GENERATION

Schoneveld Breeding supplies products for every generation. The products are sustainable and of high quality and our way of cultivation is also sustainable for the future generations. We always strive for a compact, round plant structure, long shelf life and great flowering. We always keep in mind that products must be grown efficiently with as few growth regulators and fertilizers as possible.



Sluinerweg 15  
7384 SC Wilp (GLD)  
the Netherlands

T +31 (0)571 271717

info@schoneveld.nl  
www.schoneveld-breeding.com

# TABLE OF CONTENT 2020 - 2021



## SCHONEVELD BREEDING

Strong Genetics	4	Next Generation	8
Added value for all partners	5		



## CYCLAMEN

5 in a Row	11	Allure F1	25
Overview	12	Rembrandt F1	26
Planning table	13	Merengue F1	27
Micro F1	15	Macro F1	28
Verano F1	16	XL F1	29
Donatello F1	17	Leopardo F1	30
Carino F1	18	Mammoth F1	31
Compact F1	19	Petticoat F1	32
Da Vinci F1	20	Djix F1	33
Jive F1	21	Crayon F1	34
Mini Winter F1	22		
Picasso F1	23		
Original F1	24		





Schoneveld  
breeding

**STRONG GENETICS**

## STRONG GENETICS

Strong genetics and creating added value is in our DNA. Our breeders are looking every day for the best gene combinations for a strong, richly flowering, full-bodied plant with appealing colours. As the son of an arable farmer, it was a daily occurrence for Peter van de Pol: the question of which variety is most resistant to heat, cold, moisture and certain diseases. But also, how do I realize a better price for my product? In short: with which variety can the highest efficiency be achieved? With that mindset, Peter van de Pol is now leading Schoneveld Breeding. How can growers achieve the maximum efficiency from our seeds? That starts with strong genetics.



**Peter van de Pol**

Owner/Director

+31 571 28 78 57

[petervandepol@schoneveld.nl](mailto:petervandepol@schoneveld.nl)







Schoneveld  
breeding

ADDED VALUE

## GROWING ADVICE & SALES SUPPORT

Schoneveld Breeding provides added value. We are doing this, for example, through extensive growing and sales support. Our advisors are ready to work proactively and on request. They can advise you on the best growing methods and ways to create a higher market value. All of this always in collaboration with our chain partners.



**Ton Koers**

Growing Advisor  
+31 6 54 97 73 76  
tonkoers@schoneveld.nl



**Nico de Haan**

Growing Advisor  
+31 6 30 23 42 90  
nicodehaan@schoneveld.nl



**Hay Lamers**

Growing Advisor  
+31 6 20 88 03 36  
haylamers@schoneveld.nl



**Dinja Lankhorst**

Area manager North & Central Europe  
+31 6 20 21 18 33  
dinjalankhorst@schoneveld.nl



**Gianfranco de Leo**

Area manager South Europe  
+39 340 84 514 18  
gianfrancodeleo@schoneveld.nl



**Helene Daumas**

Local area manager France  
+33 6 09 67 14 98  
helenedaumas@schoneveld.nl



**Kathy McKay**

Area manager North America  
+1 360 202 53 33  
kathymckay@schoneveld.nl



**Jerry van der Spek**

Area manager South America  
+55 19 988 05 22 81  
jvanderspek@schoneveld.nl



**Huub van Oorspronk**

Area manager Asia & Middle East  
+31 6 10 58 36 74  
huubvanoorspronk@schoneveld.nl



**Yi (Elliot) Zhao**

Assistant Area manager China  
+31 571 27 17 17  
yizhao@schoneveld.nl



**Niels Zoetelief**

Commercial Director  
+31 6 83 65 65 91  
nielsoetelief@schoneveld.nl



**Liza Braat-Thies**

Sales Support  
+31 571 27 17 17  
lizabraat@schoneveld.nl



**Catharine van den Bosch**

Sales Support  
+31 571 28 72 41  
catharinevandenbosch@schoneveld.nl





Schoneveld  
breeding

ADDED VALUE

## PRODUCT-MARKET COMBINATIONS

When developing new varieties, we are already thinking about how they can be put on the market. Which retailer would suit the variety and which grower can best grow and supply this variety? For example, we supply the Djix Cyclamen in The Netherlands, Germany and France exclusively to a Dutch, German and French retailer and it is grown by a select group of growers.



## GROWERS' ASSOCIATIONS



Schoneveld Breeding is part of the Touch Me + growers' association. This association is committed to selling the Primula obconica. Under the name Sweet Kisses, the colorful Primula is brought to the attention of consumers to bring colour into your home.

ADDENDA

In the Campanula Florentes product group, Schoneveld Breeding works exclusively in the field of product development, marketing and sales in Europe with growers' association Addenda. This means that the abundantly flowering and long-lasting Ambella and Adansa are positioned strongly in the market.







Schoneveld  
breeding

ADDED VALUE

## BEST FOR OUTDOOR



Best for Outdoor is a quality label for products which are best for outdoor use.

### Garden Selections



Packs with the Garden Selections label are marketed exclusively for the first three years and bear the quality label Best for outdoor.

### Veranda Selections



The Veranda Selections are the best for outdoor and provide great ease of use and long flowering pleasure for the consumer. These products are marketed in a recognizable manner.



## ODORA SELECTIONS



The most amazing fragrance comes to you if you choose Odora Selections. These plants are specifically selected for their appealing scent. The use of the Odora label is required.

## COLD/WARM



We breed for specific climates. We have suitable products for both warm areas with high light levels and also for cool, moist areas. The Super Serie Vintro Cyclamen is an example of such a well thought-out seasonal product. This plant flowers profusely and full in the dark and damp winter days. Another example is the large-flowered Leopardo which is ideal for warm areas where it blooms profusely especially in the heat of the summer.

**NEW** New colour or series in our assortment

**IMP** Existing product, improved by breeding

**OUT** Available while supplies last





Schoneveld  
breeding

NEXT GENERATION

## NEXT GENERATION

The products of Schoneveld Breeding are not only beautiful and genetically strong, they are also sustainable in the broadest sense of the word. We have a suitable product for every generation and future-proof is our focus in all business processes. For example, we continuously think about how sustainable cultivation at the grower and our own production of seeds can be maintained for the next generation. How can the products be grown more efficiently, and can we further reduce the use of growth regulators?

We do business sustainably and, thanks to our strong genetics, ensure that growers can grow more efficiently because they have to use less labor, inhibitors and / or fertilizers. Higher production per square meter, less purchasing production resources and therefore a higher yield. We also keep thinking about our own production. We use a closed water system and give all our plants their nutritional recipe. We also use hybrid lighting, purchase green energy and are always looking for more sustainable alternatives to our current working method.

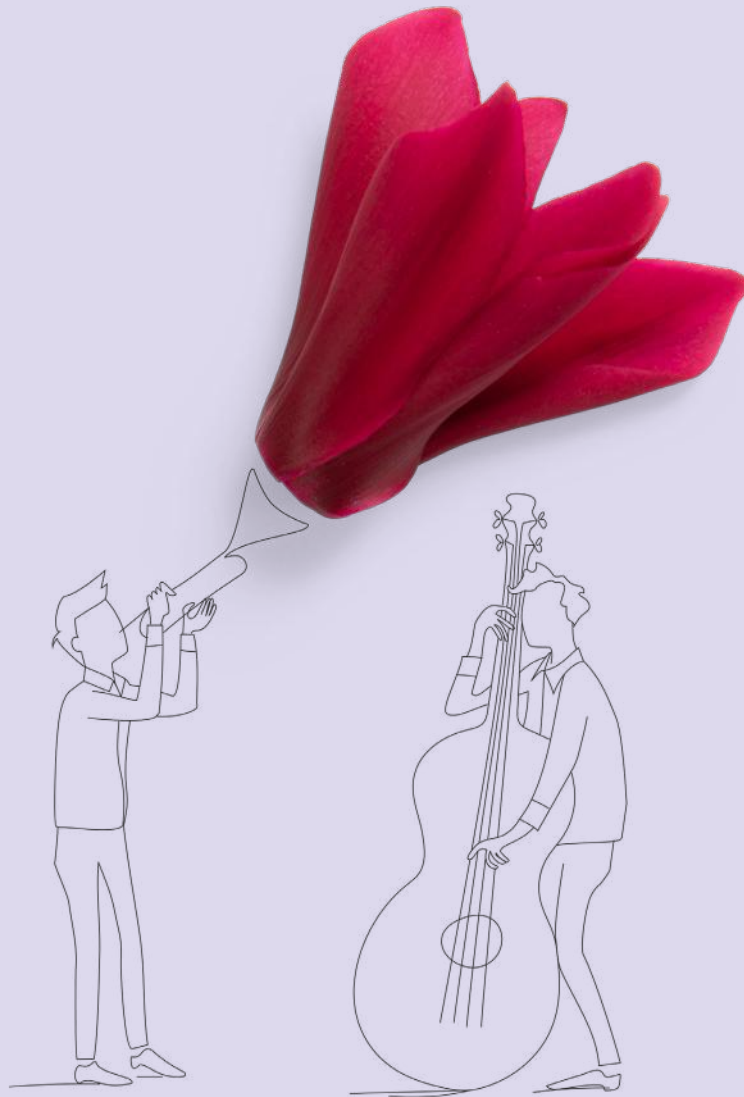


**#PLANTMOREVALUE**



**#FOREACHGENERATION**

# CYCLAMEN SUPER SERIE®



Cyclamen  
super serie



Cyclamen

super serie

## MICRO

MICRO PLANT SIZE, MINI FLOWER SIZE



MICRO



MINI

**SUPER SERIE MICRO F1**Smallest Cyclamen variety  
Suitable for small pot sizes

## MINI

MINI PLANT SIZE, MINI FLOWER SIZE



MINI



MINI

**SUPER SERIE VERANO F1**Tolerant to higher temperatures  
Best for summer cultivation**SUPER SERIE DONATELLO F1**Silver foliage (compatible with Verano)  
Best for summer cultivation**SUPER SERIE CARINO F1**Best for autumn cultivation  
Compact plant**SUPER SERIE COMPACT F1**High flower count  
Summer and/or winter flowering**SUPER SERIE DA VINCI F1**Silver foliage (compatible with Compact)  
Summer flowering**SUPER SERIE JIVE F1**

Waved flowers

**SUPER SERIE MINI WINTER F1**More open plant structure  
Late autumn and/or winter flowering**SUPER SERIE PICASSO F1**Silver foliage (compatible with Mini Winter)  
Autumn and/or winter flowering**SUPER SERIE PETTICOAT F1**Reversed flower shape with petals hanging downward  
Great for hanging basket**SUPER SERIE DJIX F1**Unique flower shape with downward facing petals  
Specialty**SUPER SERIE CRAYON F1**Unique flower pattern  
Uniform habit (compatible with Verano)

## MIDI

MEDIUM PLANT SIZE, MINI FLOWER SIZE



MEDIUM



MINI

**SUPER SERIE ORIGINAL F1**Abundant Flowering  
Long flower life

## MEDIUM

MEDIUM PLANT SIZE, MEDIUM FLOWER SIZE



MEDIUM



MEDIUM

**SUPER SERIE ALLURE F1**Suitable for phased cultivation  
Best midi for summer flowering**SUPER SERIE REMBRANDT F1**Silver foliage (compatible with Allure)  
Best for summer and/or autumn cultivation**SUPER SERIE MERENGUE F1**Fringed flower shape  
Unique**SUPER SERIE MACRO F1**Strong robust plant  
Suitable for late autumn and winter periods

## LARGE

LARGE PLANT SIZE, LARGE FLOWER SIZE



LARGE



LARGE

**SUPER SERIE XL F1**Large flowers on a compact plant structure  
Summer and/or autumn flowering**SUPER SERIE LEOPARDO F1**Heat tolerant  
Fast & early flowering**SUPER SERIE MAMMOTH F1**Extremely large flowers  
Summer and/or autumn flowering



## CYCLAMEN PERSICUM SUPER SERIE

### ABOUT SUPER SERIE

- Uniform growth and flowering within the series
- Round plant shape with sturdy flower stems
- Rich and central flowering
- A series for all growing conditions



POT SIZE  
Ø

COLD / WARM



PLANT  
HEIGHT

COLD / WARM



PLANT WIDTH  
Ø

COLD / WARM



PLANTS  
PER M<sup>2</sup>

COLD / WARM



TOTAL CROP TIME  
SOWING - FLOWERING  
(GROWING WEEKS)

COLD CLIMATE



TOTAL CROP TIME  
SOWING - FLOWERING  
(GROWING WEEKS)

WARM CLIMATE

	POT SIZE Ø	PLANT HEIGHT	PLANT WIDTH Ø	PLANTS PER M <sup>2</sup>	TOTAL CROP TIME SOWING - FLOWERING (GROWING WEEKS) COLD CLIMATE	TOTAL CROP TIME SOWING - FLOWERING (GROWING WEEKS) WARM CLIMATE
<b>MICRO</b>						
Micro F1	6 - 8cm / 7 - 9cm	10 - 15cm / 12 - 15cm	11 - 13cm / 11 - 13cm	45 - 70 / 40 - 60	25 - 26	22 - 25
<b>MINI</b>						
Verano F1	6 - 10,5cm / 9 - 12cm	10 - 20cm / 15 - 20cm	12 - 20cm / 15 - 22cm	24 - 70 / 25 - 35	23 - 24	23 - 25
Donatello F1	6 - 10,5cm / 9 - 12cm	15 - 20cm / 15 - 20cm	15 - 20cm / 15 - 22cm	24 - 33 / 25 - 35	24 - 25	24 - 26
Carino F1	9 - 10,5cm / 10,5 - 12cm	15 - 23cm / 15 - 20cm	17 - 22cm / 18 - 25cm	22 - 30 / 22 - 30	24 - 25	24 - 26
Compact F1 *	9 - 10,5cm / 10,5 - 12cm	15 - 25cm / 15 - 20cm	15 - 22cm / 15 - 22cm	22 - 30 / 22 - 35	25 - 30	25 - 28
Da Vinci F1	9 - 10,5cm / 10,5 - 12cm	15 - 25cm / 15 - 20cm	17 - 22cm / 15 - 22cm	22 - 28 / 22 - 30	26 - 28	26 - 29
Jive F1	9 - 12cm / 12 - 13cm	17 - 25cm / 15 - 20cm	17 - 25cm / 18 - 27cm	20 - 25 / 18 - 22	25 - 26	27 - 29
Mini Winter F1 *	9 - 10,5cm / 10,5 - 12cm	15 - 25cm / 15 - 20cm	15 - 25cm / 20 - 28cm	20 - 25 / 20 - 28	25 - 29	24 - 27
Picasso F1 *	9 - 10,5cm / 10,5 - 12cm	15 - 25cm / 15 - 20cm	15 - 25cm / 20 - 28cm	20 - 23 / 20 - 28	26 - 30	24 - 27
Petticoat F1	9 - 12cm / 10,5 - 12cm	15 - 25cm / 15 - 20cm	17 - 22cm / 18 - 25cm	22 - 28 / 22 - 30	27 - 28	25 - 27
Djix F1	9 - 10,5cm / 10,5 - 12cm	15 - 25cm / 15 - 20cm	15 - 22cm / 15 - 22cm	22 - 30 / 22 - 30	25 - 26	24 - 26
Crayon F1	9 - 10,5cm / 10,5 - 12cm	15 - 25cm / 15 - 20cm	15 - 20cm / 18 - 25cm	24 - 34 / 22 - 30	23 - 24	23 - 25
<b>MIDI</b>						
Original	12 - 15cm / 10,5 - 12cm	17 - 30cm / 20 - 25cm	22 - 30cm / 22 - 35cm	10 - 14 / 8 - 14	29 - 30	32 - 35
<b>MEDIUM</b>						
Allure F1	10,5 - 12cm / 12 - 13cm	17 - 25cm / 20 - 25cm	20 - 25cm / 20 - 25cm	16 - 20 / 12 - 16	25 - 26	26 - 28
Rembrandt F1	10,5 - 12cm / 12 - 13cm	17 - 27cm / 20 - 25cm	20 - 25cm / 18 - 23cm	15 - 19 / 12 - 16	27 - 28	26 - 28
Merengue F1	10,5 - 12cm / 12 - 13cm	17 - 27cm / 20 - 25cm	20 - 25cm / 20 - 28cm	12 - 16 / 12 - 16	26 - 28	26 - 29
Macro F1 *	10,5 - 15cm / 12 - 17cm	20 - 30cm / 20 - 25cm	20 - 30cm / 24 - 35cm	10 - 22 / 8 - 14	27 - 32	29 - 32
<b>LARGE</b>						
XL F1	11 - 15cm / 12 - 15cm	20 - 30cm / 25 - 35cm	20 - 30cm / 22 - 30cm	10 - 20 / 10 - 15	27 - 31	29 - 32
Leopardo F1	12 - 14cm / 12 - 14cm	25 - 30cm / 25 - 35cm	22 - 27cm / 22 - 32cm	10 - 22 / 8 - 14	26 - 27	27 - 29
Mammoth F1	13 - 17cm / 14 - 17cm	25 - 40cm / 30 - 40cm	27 - 40cm / 30 - 40cm	6 - 12 / 6 - 10	27 - 29	30 - 32




\* Also suitable in winter production

All our intellectual property, trademarks, designs and domain names are registered. All given technical information is subject to our disclaimer, which you can find on our website: [www.schoneveld-breeding.com/disclaimer](http://www.schoneveld-breeding.com/disclaimer)



SCHONEVELD BREEDING  
**PLANNING TABLE**

The planning table for cool and warm conditions serve as a guide when making your choice for a particular Super Serie variety. Due to the considerable variation in regions and climates, our growing advisors would be pleased to advise you for your particular growing conditions.

												
	OPTIMAL SOW PERIOD (CALENDAR WEEKS)		SOWING - POTTING (GROWING WEEKS)		POTTING PERIOD (CALENDAR WEEKS)		POTTING - FLOWERING (GROWING WEEKS)		BLOOMING PERIOD (CALENDAR WEEKS)		FULL FLOWERING (GROWING WEEKS)	
	COLD	WARM	COLD	WARM	COLD	WARM	COLD	WARM	COLD	WARM	COLD	WARM
<b>MICRO</b>												
Micro F1	48 - 15	8 - 18	10 - 12	10 - 11	6 - 25	20 - 28	14 - 15	11 - 13	21 - 44	32 - 44	1 - 3	1 - 3
<b>MINI</b>												
Verano F1	48 - 18	6 - 20	10 - 12	12 - 13	6 - 28	18 - 30	13 - 14	11 - 14	19 - 50	32 - 44	1 - 2	1 - 2
Donatello F1	48 - 20	6 - 20	10 - 12	12 - 13	6 - 30	22 - 32	14 - 15	11 - 14	20 - 44	35 - 44	1 - 2	1 - 2
Carino F1	48 - 20	8 - 22	10 - 12	12 - 13	6 - 28	20 - 30	14 - 15	12 - 15	20 - 50	34 - 47	1 - 2	1 - 2
Compact F1 *	48 - 15	6 - 20	10 - 15	12 - 13	6 - 25	18 - 32	15 - 18	12 - 16	5 - 40	32 - 48	1 - 3	1 - 3
Da Vinci F1	48 - 15	6 - 20	10 - 12	12 - 13	6 - 28	20 - 32	16 - 18	13 - 16	22 - 41	36 - 48	1 - 3	1 - 3
Jive F1	48 - 20	7 - 17	10 - 12	12 - 13	6 - 30	22 - 32	15 - 16	15 - 18	21 - 46	36 - 47	1 - 3	1 - 3
Mini Winter F1 *	8 - 27	8 - 22	10 - 15	12 - 13	18 - 37	22 - 34	15 - 19	12 - 15	21 - 6	38 - 52	1 - 3	1 - 3
Picasso F1 *	8 - 22	8 - 22	10 - 15	12 - 13	18 - 37	22 - 34	16 - 20	12 - 15	23 - 6	38 - 52	1 - 3	1 - 3
Petticoat F1	48 - 16	6 - 20	10 - 12	12 - 13	6 - 26	22 - 32	17 - 18	13 - 16	23 - 44	36 - 48	1 - 3	1 - 3
Djix F1	48 - 20	6 - 20	10 - 12	12 - 13	6 - 30	20 - 32	15 - 16	13 - 16	21 - 48	36 - 48	1 - 3	1 - 3
Crayon F1	48 - 18	8 - 22	10 - 12	12 - 13	6 - 28	20 - 30	13 - 14	12 - 15	19 - 44	34 - 47	1 - 3	1 - 3
<b>MIDI</b>												
Original F1	48 - 10	2 - 10	10 - 15	14 - 15	6 - 25	18 - 24	19 - 20	18 - 22	25 - 45	40 - 48	1 - 3	1 - 3
<b>MEDIUM</b>												
Allure F1	48 - 18	6 - 20	10 - 15	13 - 14	6 - 28	20 - 32	15 - 16	13 - 16	21 - 44	34 - 48	1 - 3	1 - 3
Rembrandt F1	48 - 18	6 - 20	10 - 15	13 - 14	6 - 28	18 - 30	17 - 18	12 - 15	23 - 46	32 - 46	1 - 3	1 - 3
Merengue F1	48 - 18	6 - 20	10 - 15	13 - 14	6 - 28	20 - 32	16 - 18	13 - 16	22 - 46	34 - 48	1 - 3	1 - 3
Macro F1 *	48 - 25	8 - 20	10 - 15	14 - 15	6 - 37	24 - 34	17 - 22	15 - 18	23 - 6	40 - 52	1 - 3	1 - 3
<b>LARGE</b>												
XL F1	48 - 25	8 - 20	10 - 15	14 - 15	6 - 40	24 - 34	17 - 21	15 - 18	23 - 5	40 - 52	1 - 3	1 - 3
Leopardo F1	48 - 20	5 - 18	10 - 15	14 - 15	6 - 30	18 - 28	15 - 16	13 - 16	21 - 46	34 - 44	1 - 3	1 - 3
Mammoth F1	48 - 18	3 - 16	12 - 15	14 - 15	8 - 28	18 - 30	17 - 19	16 - 19	23 - 47	36 - 52	1 - 3	1 - 3

\* Also suitable in winter production

All our intellectual property, trademarks, designs and domain names are registered. All given technical information is subject to our disclaimer, which you can find on our website: [www.schoneveld-breeding.com/disclaimer](http://www.schoneveld-breeding.com/disclaimer)









CYCLAMEN PERSICUM  
**MICRO F1**

**About Micro F1**

- Smallest Cyclamen variety
- Genetically compact
- Suitable for small pot sizes
- Micro plant



Red



Light Salmon Pink



White with Eye



Pure White



Neon Pink



Orchid



Dark Violet



Deep Wine Red



Wine Red



Violet Flamed



Wine Red Flamed



Salmon Flamed



Neon Flamed





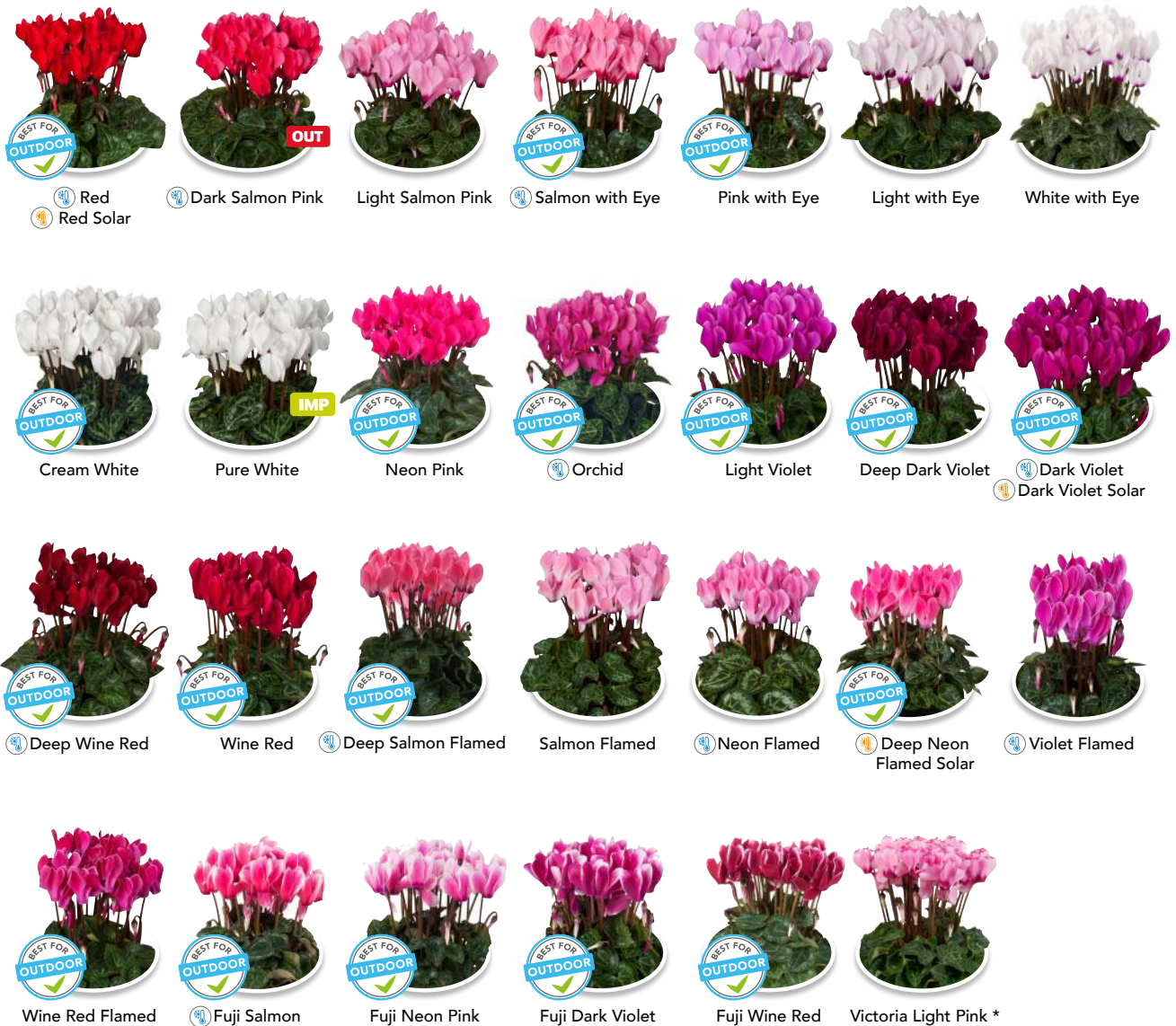
Cyclamen

# super serie

## CYCLAMEN PERSICUM VERANO F1

### About Verano F1

- Tolerant to higher temperatures
- Best for summer cultivation
- Easy to grow
- Fast flowering
- Best for Outdoor



\*The intensity of the colour on the edge of the Victoria flower may be influenced by the light level.





Cyclamen

super serie

CYCLAMEN PERSICUM  
DONATELLO F1

**About Donatello F1**

- Silver foliage (compatible with Verano)
- Best for summer cultivation
- Good contrast between flowers and leaves
- Many small leaves, abundant flowering
- Best for Outdoor



Red



Salmon with Eye



Light with Eye



Cream White



Neon Pink



Light Violet



Dark Violet



Deep Wine Red



Neon Flamed



Wine Red Flamed





Cyclamen

# super serie

CYCLAMEN PERSICUM  
**CARINO F1**

**About Carino F1**

- Vigorous medium plant structure
- Best for autumn cultivation
- Compact plant
- Best for Outdoor





Cyclamen

# super serie

CYCLAMEN PERSICUM  
**COMPACT F1**

**About Compact F1**

- Summer and/or winter flowering
- Unique plant quality
- High flower count
- Genetically compact



Red



Salmon Red



Dark Salmon Pink



Salmon with Eye



Pink with Eye \*



White with Eye



Pure White



Neon Pink



Light Neon Pink



Light Violet



Dark Violet



Dark Violet with Edge



Wine Red



Wine Red with Edge



Salmon Flamed



Neon Flamed



Violet Flamed



Violet Dip



Wine Red Flamed



Fuji Red



Fuji Neon Pink



Fuji Light Violet



Fuji Dark Violet



Fuji Wine Red

\*Only available as separate colour





Cyclamen

super serie

MINI

CYCLAMEN PERSICUM  
**DA VINCI F1**

**About Da Vinci F1**

- Silver foliage (compatible with Compact)
- Summer flowering
- Abundant flowers



Dark Salmon Pink



White with Eye



Cream White



Neon Pink



Light Violet



Dark Violet



Wine Red



Flamed Mix







CYCLAMEN PERSICUM  
**JIVE F1**

**About Jive F1**  
· Waved flowers



Salmon Red



Light Salmon Pink



White with Eye



Cream White



Neon Pink



Dark Violet



Wine Red



Salmon Flamed



Neon Flamed



Violet Flamed





Cyclamen

super serie

CYCLAMEN PERSICUM

MINI WINTER F1

About Mini Winter F1

- Late autumn and/or winter flowering
- More open plant structure
- Less sensitive to Botrytis



Red



Light Salmon Pink



Salmon with Eye



White with Eye



Cream White



Pure White



Deep Neon Pink



Neon Pink



Light Neon Pink



Light Violet



Deep Dark Violet



Dark Violet



Wine Red



Salmon Flamed



Neon Flamed



Violet Flamed



Wine Red Flamed



Fuji Magenta



Fuji Wine Red \*

\* Only available as separate colour







CYCLAMEN PERSICUM  
**PICASSO F1**

**About Picasso F1**

- Silver foliage (compatible with Mini Winter)
- Autumn and/or winter flowering
- Best mini for outdoor use



Red



Salmon with Eye



Light with Eye



Cream White



Neon Pink



Dark Violet



Wine Red



Violet Flamed



Wine Red Flamed





Cyclamen



CYCLAMEN PERSICUM  
**ORIGINAL F1**

**About Original F1**

- Abundant Flowering
- Long flower life
- Origin of Super Serie



Red



Dark Salmon Pink



Light Salmon Pink



Light with Eye



Pure White



Neon Pink



Orchid



Light Violet



Dark Violet



Wine Red



Salmon Flamed



Neon Flamed



Violet Flamed



Spotted





Cyclamen

# super serie

CYCLAMEN PERSICUM  
**ALLURE F1**

**About Allure F1**

- Best midi for summer flowering
- Suitable for phased cultivation
- Strong/Heat tolerant



Red



Dark Salmon Pink



Light Salmon Pink



Light with Eye \*



White with Eye



Cream White



Pure White



Neon Pink



Light Neon Pink



Orchid



Light Violet



Lavender \*



Dark Violet



Wine Red



Salmon Flamed



Deep Salmon Flamed



Neon Flamed



Violet Flamed



Wine Red Flamed



Fuji Red



Fuji Neon Pink



Fuji Dark Violet



Fuji Wine Red

\*Only available as separate colour and solar mix.





Cyclamen

super serie

CYCLAMEN PERSICUM

**REMBRANDT F1**

**About Rembrandt F1**

- Silver foliage (compatible with Allure)
- Best for summer and/or autumn cultivation
- Christmas period (Red and White)



Salmon Red



Light with Eye



Pure White



Neon Pink



Orchid



Light Violet



Dark Violet



Wine Red



Neon Flamed





Cyclamen

super serie

CYCLAMEN PERSICUM  
**MERENGUE F1**

**About Merengue F1**

- Fringed flower shape
- Unique



Salmon Red



Light Salmon Pink

OUT



Pure White



Neon Pink



Dark Violet



Wine Red



Magenta



Neon Flamed





Cyclamen

super serie

CYCLAMEN PERSICUM  
**MACRO F1**

**About Macro F1**

- Strong robust plant
- Suitable for late autumn and winter periods
- Requires less light to flower
- Best midi in that period



Red



Dark Salmon Pink



Light Salmon Pink



Pink with Eye



Light with Eye



White with Eye



Cream White



Pure White



Neon Pink



Light Violet



Lavender



Dark Violet



Wine Red



Salmon Flamed



Neon Flamed



Violet Flamed



Wine Red Flamed



Fuji Red



Fuji Salmon



Fuji Neon Pink



Fuji Dark Violet



Fuji Wine Red





CYCLAMEN PERSICUM  
XL F1

About XL F1

- Large flowers on a compact plant structure
- Summer and/or autumn flowering



Red



Dark Salmon Pink



Light Salmon Pink



Light with Eye



White with Eye



Cream White



Pure White



Neon Pink



Orchid



Light Violet



Dark Violet



Wine Red



Salmon Flamed



Neon Flamed



Violet Flamed



Fuji Red



Fuji Salmon



Fuji Wine Red





LARGE

Cyclamen

super serie

CYCLAMEN PERSICUM  
LEOPARDO F1

NEW

**About Leopardo F1**

- Heat tolerant
- Easy to grow
- Large Flowers
- Fast & early flowering
- More open plant structure



Red



Cream White



Dark Salmon Pink



Light Neon Pink



Violet Flamed



Dark Violet



THE #1 HEAT TOLERANT LARGE TYPE CYCLAMEN





CYCLAMEN PERSICUM  
**MAMMOTH F1**

**About Mammoth F1**

- Extremely large flowers
- Summer and/or autumn flowering
- Suitable for 13-35cm pot
- Largest variety in the large types



Red



Light Salmon Pink



Cream White



Pure White \*

OUT



Neon Pink



Orchid



Dark Violet



Wine Red



Salmon Flamed



Neon Flamed



Wine Red Flamed

\* Only available as separate colour.





Cyclamen

super serie

CYCLAMEN PERSICUM  
**PETTICOAT F1**

**About Petticoat F1**

- Reversed flower shape with petals hanging downward
- Great for hanging basket
- Unique flowers



Dark Salmon Pink



Light with Eye



Pure White



Neon Pink



Dark Violet



Wine Red

super serie  
**Petticoat**





Cyclamen

superserie

CYCLAMEN PERSICUM  
DJIX F1

**About Djix F1**

- Specialty
- Unique flower shape with downward facing petals
- Excellent shelf life



Red



Wine Red





Cyclamen

super serie

CYCLAMEN PERSICUM  
**CRAYON F1**


**NEW**
**About Crayon F1**

- Unique flower pattern
- Uniform habit (compatible with Verano)
- Novelty
- Specialty



Wine Red



Salmon



**UNIQUE FLOWER PATTERN**











**Disclaimer 2020-2021 © Schoneveld Breeding** Despite the fact that Schoneveld Breeding has taken all possible steps to ensure that the information given here is correct, Schoneveld Breeding cannot be held liable for any inaccuracies and/or incomplete information in this catalogue. Schoneveld Breeding cannot be held liable for any damage as a result of the information provided. The information provided is based on Schoneveld Breeding's own experiences and may differ due to alternative climate or glasshouse conditions. The text and photos, complete or in part, may only be used for Schoneveld Breeding genetic material and may not be copied or reproduced for other purposes without obtaining prior written consent from Schoneveld Breeding. All our intellectual property, trademarks, designs and domain names are registered with the trademark and patent bureau NLO Shieldmark.

Schoneveld Breeding is a registered trading name of Schoneveld Twello bv.

*Read the disclaimer in the language of your choice at [www.schoneveld-breeding.com/disclaimer](http://www.schoneveld-breeding.com/disclaimer)*





Sluinerweg 15  
7384 SC Wilp (GLD)  
the Netherlands

T +31 (0)571 271717

info@schoneveld.nl  
www.schoneveld-breeding.com